

01_Contents

Drawing No.	Drawing Name	Scale
15001-BR_DA_101	Contents + Issue Register	NTS
15001-BR_DA_102	Site Plan	1:400
15001-BR_DA_103	Roof Plan	1:200
15001-BR_DA_104	Podium Detail Plan	1:150
15001-BR_DA_105	Detail Plans	1:200
15001-BR_DA_106	Sections	1:100
15001-BR_DA_107	Planting Plan + Selection	NTS

02_Issue Register

Issue Date	Issue Reason	Drawn/Checked	Rev. No.
June 2015	For Review	BP/KL	A

03_Key Site Plan



Legend

- Public Domain concept scope
- Young + Loftus Street New Builds DA boundary
- - - 50 Bridge Street DA boundary

ATTACHMENT A



Client

AMP Capital

Drawn
Checked

BP
KL

Scale
Date

NTS
June 2015

Dwg. No
Revision

15001-BR_DA_101
A



Key

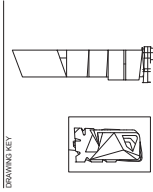
1. *Platanus acerifolia* to be removed
2. Make good Phillip Street footpath where necessary
3. Make good Bridge Street footpath where necessary
4. Upgrade existing asphalt to standard CoS 'Austral Black' granite paving
5. Replace or relocate existing trees to new kerb alignment
6. Future closure of Loftus Street by Sydney Lightrail shown indicatively only
7. Upgrade existing street light to CoS standard Smart Pole
8. Loading dock entry
9. Carpark entry below
10. Commercial lobby entry

ATTACHMENT A

ATTACHMENT A

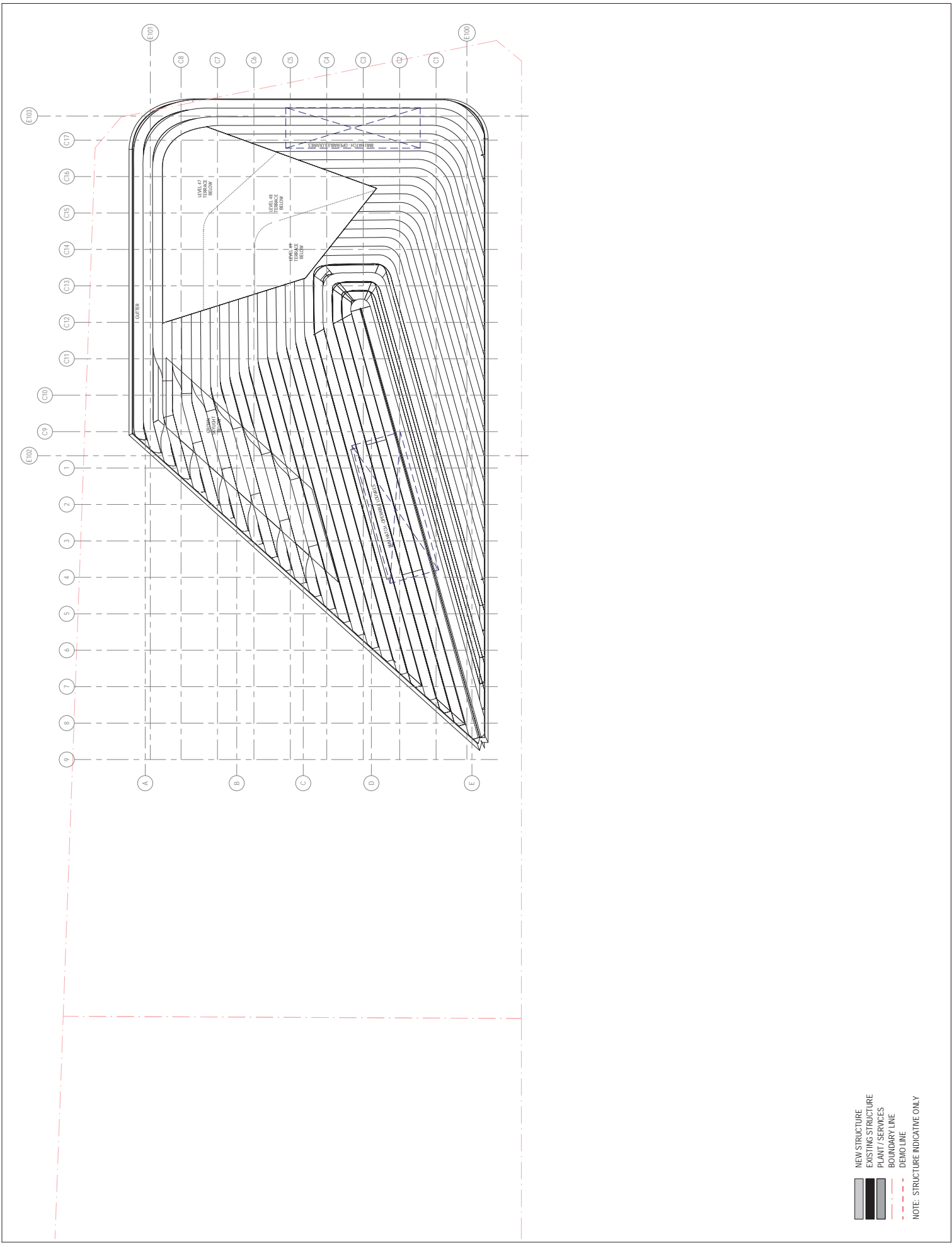
DESIGN ARCHITECT
3XN
+65 7026 2648
EXECUTIVE ARCHITECT
BUN
+61 2 8287 7200
STRUCTURAL AND CIVIL ENGINEER
URBS
+61 2 8233 9900

PROJECT NUMBER
1171
REVISED PROJECT NUMBER
S1309002
DRAWING SET

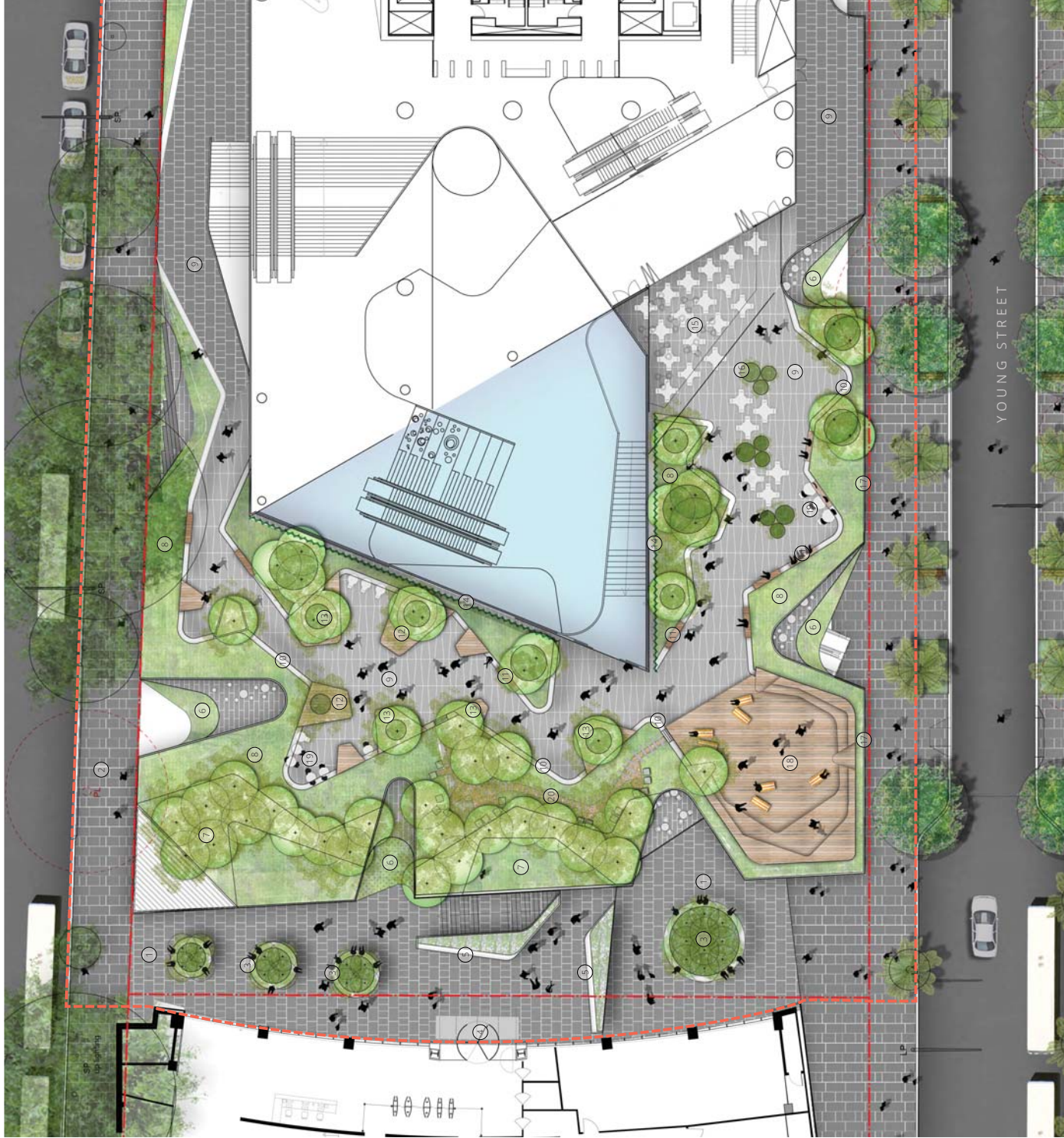


TRUE NORTH (MGA) PROJECT NORTH
GRAPHIC SCALE 1:200
GRAPHIC SCALE 1:500
GRAPHIC SCALE 1:1000
SCALE
1:200
DO NOT SCALE
STATUS
STAGE 2 DEVELOPMENT
APPLICATION
DRAWING
ROOF PLAN

DRAWING NUMBER
DA-AR-50-BRR-01
ISSUE DATE
02/07/2015
ISSUE
A



NEW STRUCTURE
EXISTING STRUCTURE
PLANT / SERVICES
BOUNDARY LINE
DEMO LINE
NOTE: STRUCTURE INDICATIVE ONLY

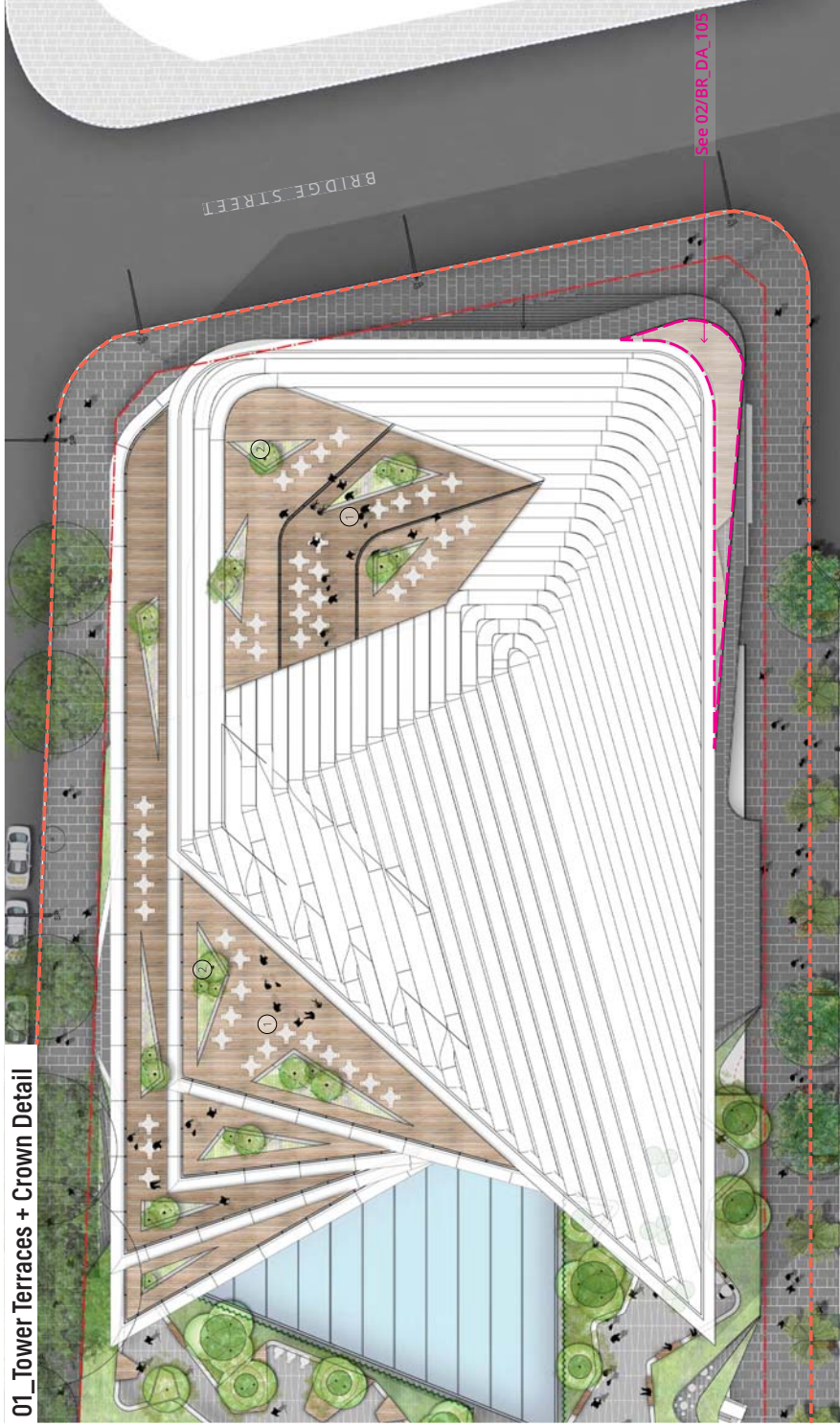


Key

- 1_CoS 'Austral Black' granite detail paving in small unit size and varying finishes
- 2_Existing *Platanus acerifolia* to be removed
- 3_Raised precast concrete planter with seating edge, feature trees and mass planting
- 4_New entry to 33 Alfred Street
- 5_Raised precast concrete planter with seating edge to architectural balustrade with screening planting
- 6_Cascading planting above building entries
- 7_Mass planted terraces over building service risers
- 8_Mass planting
- 9_Geometric stone paving
- 10_450mm high concrete seating edge
- 11_Timber seats with back rest to concrete
- 12_900mm high timber bench with stools and planter to centre
- 13_450mm high timber seating platform with planter to centre
- 14_Cascading planting to steel planter edge, visible from within podium
- 15_Covered outdoor dining area
- 16_Above ground planters with mass planting and small trees
- 17_Planted building parapet and safety balustrade to architects' detail
- 18_Timber amphitheatre with open deck
- 19_Outdoor dining furniture, tables fixed in spigots
- 20_Garden path with concrete planks in decomposed granite and fixed seating

ATTACHMENT A

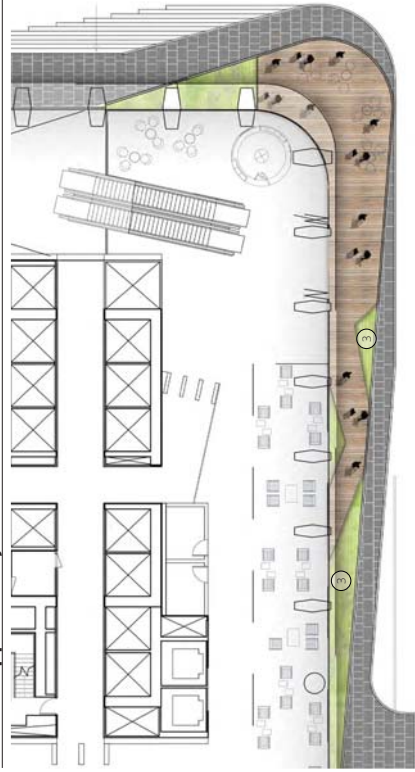
01_Tower Terraces + Crown Detail



Key

- 1_Flush timber deck
- 2_Raised folded metal planter with mass planting and small trees
- 3_Mass planting

02_L01 Upper Lobby Terrace Detail Plan



ATTACHMENT A

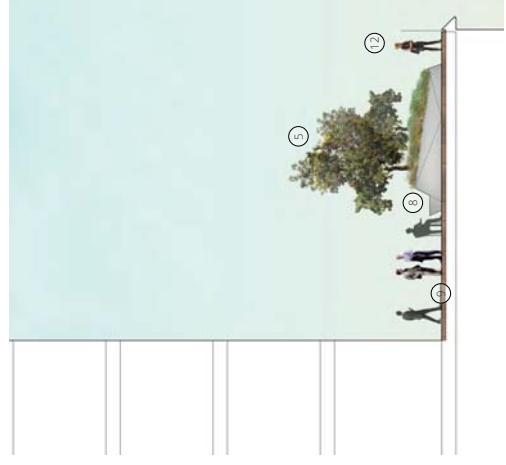
01_Section AA - Goldsbrough Lane



Key

- 1_Phillip Street
- 2_Precast circular concrete planter with back rest
- 3_Mass planting
- 4_CoS 'Austral Black' granite detail paving in small unit size and varying finishes
- 5_Wind tolerant ornamental tree
- 6_Concrete planter with seating edge
- 7_Low mass planting to screen architectural balustrade
- 8_Raised folded metal planter with mass planting
- 9_Flush timber deck
- 10_450mm high timber seating platform with planter to center
- 11_Timber amphitheatre with open deck
- 12_Safety balustrade to architect's detail
- 13_Precast concrete seating edge
- 14_Terracing mass planting to screen service risers. Garden path and seating beyond

02_Section CC - Typical Tower Terrace Section

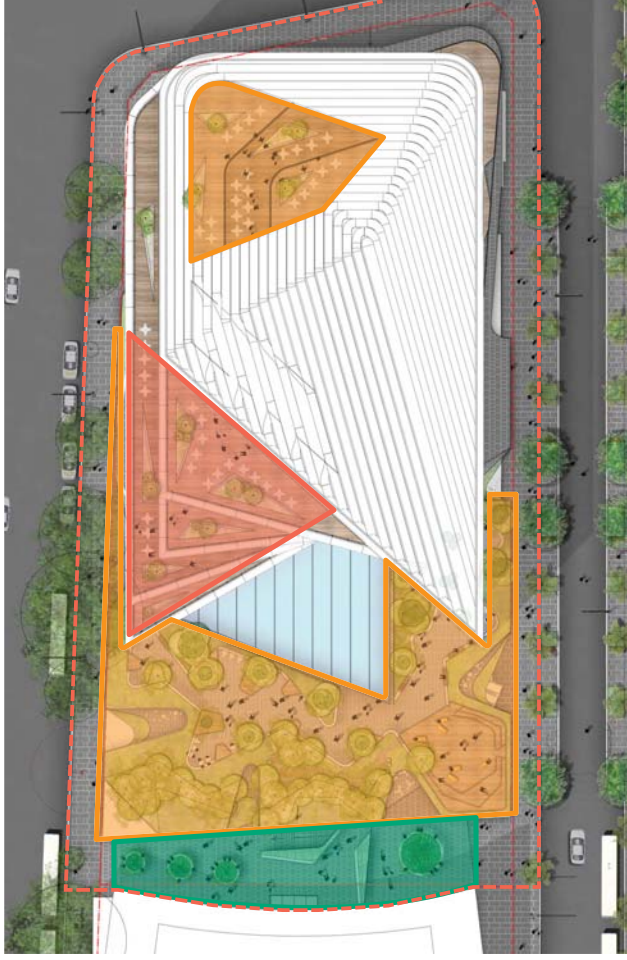


03_Section BB - Rooftop Terrace



ATTACHMENT A

01_Planting Plan



02_Planting Selection



Rooftop Planting - Full Sun



Rooftop Planting - Partial Shade



Tower Roof Terraces - Grey palette



White palette



Rooftop Planting + L50 - Partial Shade

Design intent: Variety of coastal heath planting to create sheltered, flowering garden setting as well as provide outlook of seasonal colour for adjacent buildings.

Botanic Name	Common Name	Estimated Pot Size	Origin
Shrubs and Groundcovers			
Viola hederacea	Native Violet	150mm	native
Epacris longifolia	Native Fuchsia	150mm	native
Dianella 'Little Jess'	Flax Lily	150mm	native
Ozorhamnus flammifolius	Rice Flower	200mm	native
Myoporum parvifolium	Creeping Boobialla	150mm	native
Helichysum petiolare	Liquorice Plant	150mm	exotic
Dooryardies palmieri	Giant Spear Lily	500L	native
Lomanara 'Karninus Deluxe'	Mat Rush	150mm	native

Street & Laneway Planting

Design intent: Sheltered garden within a grove of trees, with low, lush groundcover planting.

Botanic Name	Common Name	Estimated Pot Size	Origin
Trees			
Besula nigra	River Birch	200L	exotic
Shrubs and Groundcovers			
Correa alba	White Correa	200mm	native
Leucophyta brownii	Cushion Bush	200mm	native
Helichysum petiolare	Liquorice Plant	150mm	exotic
Banksia spinulosa	Heath Myrtle	200mm	native
Dillwynia rectoria	Heath Banksia	300mm	native
Epacris longifolia	Eggs and Bacon	150mm	native
Brachyscome multifida	Cut-leaved Daisy	150mm	native
Persoonia Champagneyi	Mountain Caeubing	150mm	native
Ozorhamnus flammifolius	Rice Flower	200mm	native
Grevillea buxifolia	Grey Spider Flower	200mm	native
Carpathicus glaucescens	Pig Face	150mm	native
Festuca glauca	Native Rosemary	300mm	native
Dichelachne crinita	Blue Fescue	150mm	exotic
	Longhair Plume Grass	150mm	native

Tower Roof Terraces

Design intent: Variety of coastal heath planting to create contrasting colour palettes, providing an outlook of seasonal colour for adjacent buildings.

Botanic Name	Common Name	Estimated Pot Size	Origin
Low Shrubs and Groundcovers			
Correa alba	White Correa	150mm	native
Leucophyta brownii	Cushion Bush	200mm	native
Helichysum petiolare	Liquorice Plant	150mm	exotic
Banksia spinulosa	Heath Myrtle	200mm	native
Dillwynia rectoria	Heath Banksia	300mm	native
Epacris longifolia	Eggs and Bacon	150mm	native
Brachyscome multifida	Cut-leaved Daisy	150mm	native
Persoonia Champagneyi	Mountain Caeubing	150mm	native
Ozorhamnus flammifolius	Rice Flower	200mm	native
Grevillea buxifolia	Grey Spider Flower	200mm	native
Carpathicus glaucescens	Pig Face	150mm	native
Festuca glauca	Native Rosemary	300mm	native
Dichelachne crinita	Blue Fescue	150mm	exotic
	Longhair Plume Grass	150mm	native

Rooftop + L50 Planting - Full Sun

Botanic Name	Common Name	Estimated Pot Size	Origin
Trees			
Banksia integrifolia	Coast Banksia	200L	native
Metrosideros excelsa	NZ Christmas Bush	400L	exotic
Shrubs and Groundcovers			
Banksia spinulosa	Heath Banksia	300mm	native
Brachyscome multifida	Cut-leaved Daisy	150mm	native
Chryscephalum apiculatum	Yellow Buttons	150mm	native
Carpathicus glaucescens	Pigface	150mm	native
Dichelachne crinita	Longhair Plume Grass	150mm	native
Ozorhamnus flammifolius	Rice Flower	200mm	native
Myoporum parvifolium	Creeping Boobialla	150mm	native
Helichysum petiolare	Liquorice Plant	150mm	exotic
Westringia 'Blue Gem'	Native Rosemary	300mm	native

